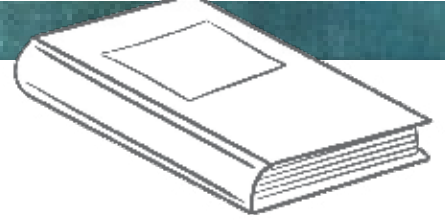


123



ABC



KS2 SATs: a parents' guide

If your child will be sitting Y6 SATs in 2019, read on for the most up-to-date information for parents.



In the summer term of 2016, children in Y2 and Y6 were the first to take new SATs tests. The current SATs for English and maths reflect the updated national curriculum, and are more rigorous than previous years' tests. There is also a completely new SATs marking scheme and grading system which has replaced national curriculum levels.

What are SATs?

At the end of Y6, English schoolchildren sit national tests in **Reading, Maths** and **Spelling, punctuation and grammar (SPAG)**. These tests are both set and marked

SATs results are used to measure your child's school's performance

www.theschoolrun.com

externally, and the results are used to measure the school's performance (for example, through reporting to Ofsted and published league tables). Your child's marks will be used in conjunction with teacher assessment to give a broader picture of their attainment.

KS2 reading

The reading test is a single paper with questions based on three passages of text. Your child will have an hour, including reading time, to complete the test. There will be a selection of question types, including:

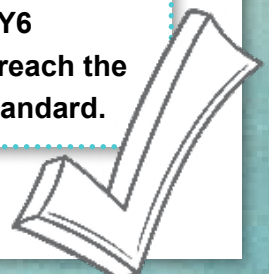
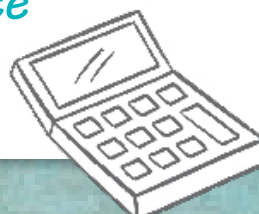
- Ranking/ordering, for example, 'Number the events below to show the order in which they happen in the story'
- Find and copy, e.g. 'Find and copy a word that suggests what the weather is like in the story'
- Short constructed response, for example: 'What does the bear eat?'

How are SATs marked?

- Instead of national curriculum levels, children are given scaled scores and details of whether they've reached the expected standard ('NS' means that the expected standard was not achieved; 'AS' means it was).

- The scaled scores for the KS2 test range between 80 (the lowest possible scaled score) and 120 (the highest possible scaled score). The expected standard for each test is a scaled score of 100 or more.

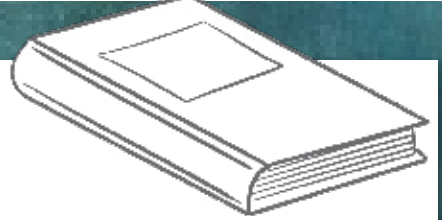
- The Department for Education expects at least 65 per cent of Y6 children to reach the expected standard.



123



ABC



Find lots more free SATs information for parents at www.theschoolrun.com/sats

In 2018 the Department for Education announced that the reading content of KS2 SATs will be closely linked to the curriculum in future years to ensure children are drawing on their knowledge when answering reading comprehension questions.

KS2 grammar, spelling and punctuation

The SPAG test consists of two parts: a grammar and punctuation paper requiring short answers, lasting 45 minutes, and an aural spelling test of 20 words, lasting around 15 minutes.

The grammar and punctuation test includes two sub-types of questions:

- Selected response, e.g. 'Identify the adjectives'

- Constructed response, e.g. 'Correct/complete/rewrite the sentence below,' or, 'The sentence below has an apostrophe missing. Explain why it needs an apostrophe.'

KS2 maths

Children sit three papers in maths: Paper 1 (arithmetic, 30 minutes), Papers 2 and 3 (reasoning, 40 minutes each).

Paper 1 consists of fixed response questions (children

have to give correct answers to calculations). Papers 2 and 3 involve question types including multiple choice.

KS2 science

Not all children in Year 6 will take science SATs. However, a number of schools take part in science sampling, a test administered to a selected sample of children thought to be representative of the population as a whole.



KS2 SATs 2019 timetable

- The Year 6 KS2 SATs will be administered in the week commencing 13 May 2019.

Monday 13 May 2019

English grammar, punctuation and spelling
Paper 1: questions and Paper 2: spelling

Tuesday 14 May 2019 English reading

Wednesday 15 May 2019

Mathematics Paper 1: arithmetic and Paper 2: reasoning

Thursday 16 May 2019 Mathematics Paper 3: reasoning

www.theschoolrun.com

Science sampling testing took place in 2018 but won't be happening in 2019.

Do all children have to take SATs?

In England, the tests are compulsory for all seven year olds (KS1 SATs at the end of Year 2) and 11 year olds (KS2 SATs at the end of Y6).

